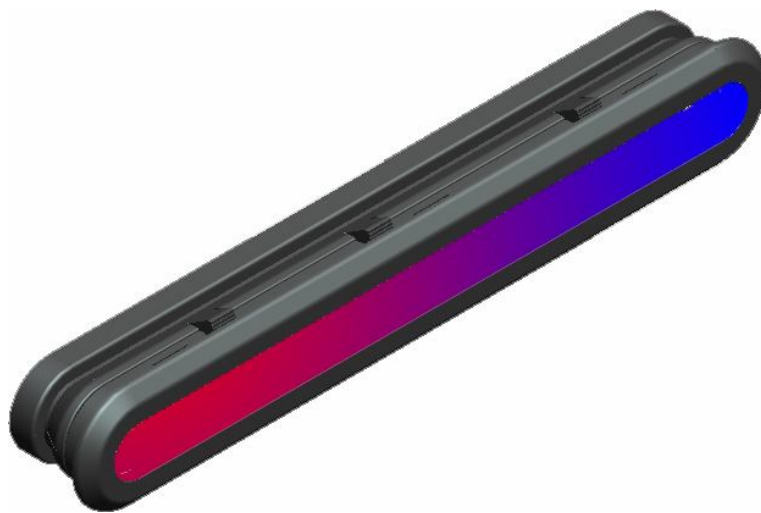
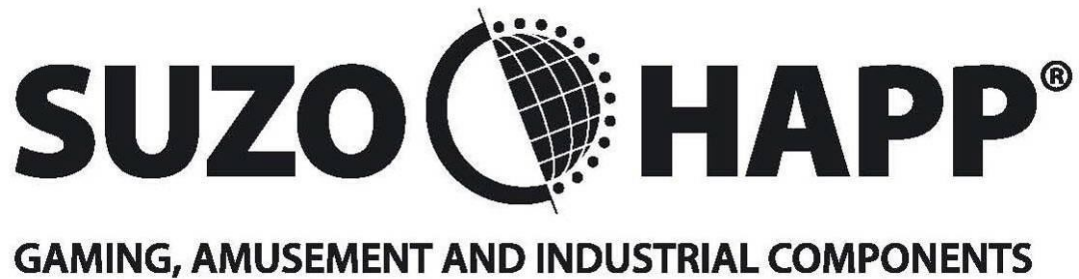


RGB LED LIGHT STRIP FOR XENON TOPPER



Order Number: 104-02001

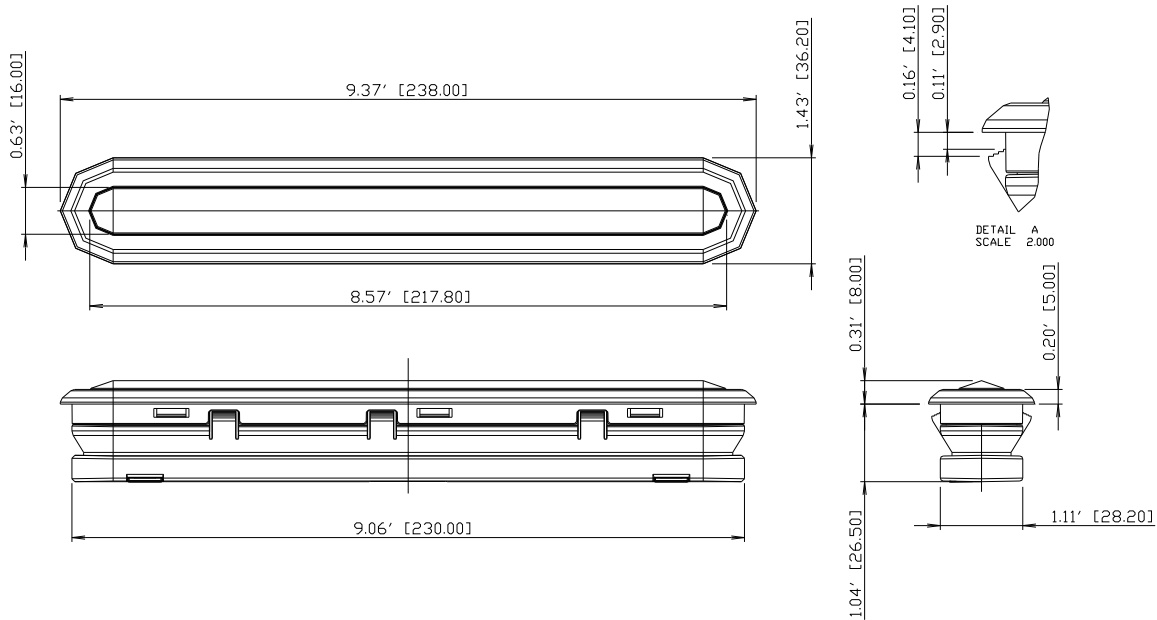
Main Features

- Light strips work in conjunction with the RGB XENON topper(104-07000)
- A dazzling light show runs from the topper box into the light strips and back
- Light strips can be mounted anywhere in a cabinet and connected by wiring (not included) to the Xenon RGB topper
- Opaque bezel contains bright multi-color LED's for a multi-colored light show

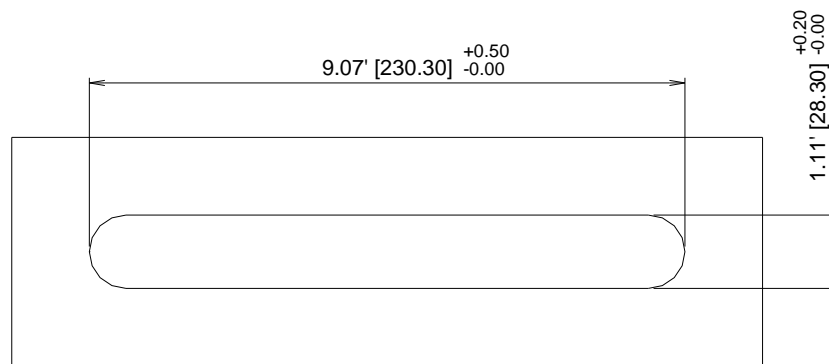
Note: The specifications and information contained here are for quick reference only and are subject to change without notice. For detail product specification, please refer to formal product documentation.

Warning: In case of removal of the diffuser lens do not look straight into the LEDs since this may cause serious eyes Injuries!

RGB LED LIGHT STRIP FOR XENON TOPPER

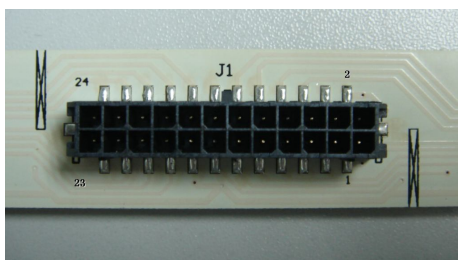


Light Strip Dimensions



Panel Opening

Connection Diagrams



Connector type on light strip: Molex 43045-2418
Mate with connector on cable: Molex 43025-2400

| | | | | | | | | | | | | |
|----------|----|-----|-----|-----|-----|-----|-----|-----|-----|-----|-----|-----|
| Pin # | 1 | 2 | 3 | 4 | 5 | 6 | 7 | 8 | 9 | 10 | 11 | 12 |
| Function | R | B | G | NC | D1 | D2 | D3 | D4 | D5 | D6 | D7 | D8 |
| Pin # | 13 | 14 | 15 | 16 | 17 | 18 | 19 | 20 | 21 | 22 | 23 | 24 |
| Function | D9 | D10 | D11 | D12 | D13 | D14 | D15 | D16 | D17 | D18 | D19 | D20 |

IMPORTANT:

1. Shut-off power from host machine during installation.
2. Power supply to light strip: 12VDC 1.5A.